



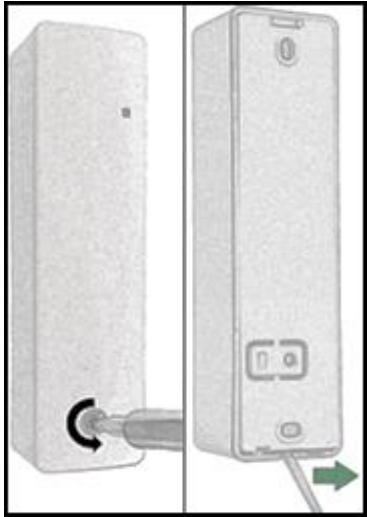
QUICK INSTALLATION GUIDE

LEAKAGE DEVICE (LAN-WMBUS-G2-LDP)



Recommended mounting instructions:

- For best horizontal range, place the device upright
- For best vertical range, place the device horizontally
- For maximum range, mount the device and receiver so they have the same polarization
- Avoid placing directly against metallic objects to maximize range
- Mount with either double-sided tape or screws



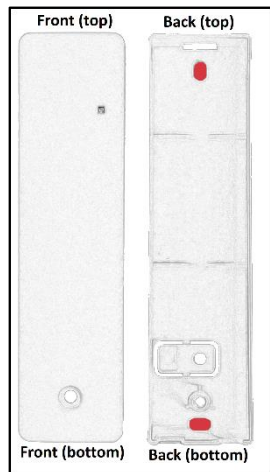
Note: If double sided tape is going to be used instead of screws to mount the device, skip to **Step 2b**.

Step 1a (left):

Open the device using a torx screwdriver on the front screw. Unscrew by turning counterclockwise.

Step 1b (right):

Separate the back piece by using, for example, a screwdriver at the bottom of the device as in the right picture. Once opened, the PCB will be visible on the inside.



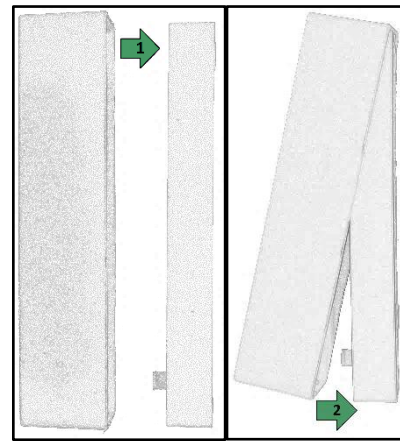
Step 2a (Mounting with screws):

Mount the back piece to a wall according to the recommended mounting instructions on the beginning of this guide.

Fasten the screws in the holes marked by red in the picture and then go to **Step 3**.

Step 2b (Mounting with double sided tape)

Stick the double-sided tape onto the back piece and then mount the device to a surface according to the recommended mounting instructions on the beginning of the guide. Skip to **Step 5**.

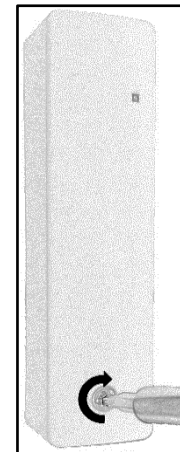


Step 3a (left):

See picture in **Step 2** on the orientation of the device, then insert the top part of the front piece onto the top part of the back piece (1).

Step 3b (right):

Insert the bottom part of the front piece onto the bottom part of the back piece (2).



Step 4:

Put the torx screw (from **Step 1**) in the hole at the front and tighten the screw using a torx screwdriver.

Make sure that the device is securely mounted.

Step 5:

The device is in sleep mode when delivered. Activation of the device can be done in two ways – Choose the preferred option in **Step 6** or **Step 7**.

Step 6 (Activate by shortening the non-conducting black cable)

This can be done using, for example, a paper clip. Make sure one side of the clip connect to the metal on the inside of the black cable and one side connects with the outside metal of the clip. The red LED on the front of the device will turn on when connection has been made. Once it starts flashing, the startup sequence has been initiated - remove the clip to start the sequence.

Next, connect the white conducting leakage cable to the black cable and screw it on tightly. Go to **Step 8**.

Note: During the first four minutes after activation, the red LED at the front will be active if leakage is detected.

Step 7 (Activate by using water on white cable)

Connect the white conducting leakage cable to the black non-conducting cable. Dip the white leakage cable in water – the red LED on the front of the device will turn on when water is detected. Once the LED starts flashing, the startup sequence has been initiated - remove the leakage cable from the water to start the sequence.

Go to **Step 8**.

Note: During the first four minutes after activation, the red LED at the front will be active if leakage is detected.

Step 8:

Lay out the leakage cable at the area where leakage needs to be detected. Make sure the leakage cable is against the surface which is monitored by using the supplied clips or by using straps.

Installation is complete!

